

Outdoor Saunas

HEKLA

Pre-delivery & Build Guide

HEKLA

Contents

Your Journey Starts Here	04
Before Your Build is Booked	05
Sauna Build Overview	06
Sauna Footprint	07
Site Requirements	08
Base Requirements	09
Access Requirements	10
Build Day	11
Electrical Requirements	12
Post-installation requirements	13
Important Notes	14
Support	14

Thank you for choosing Hekla.

Your journey starts here

This guide is designed to ensure your sauna delivery and build runs smoothly, safely, and without delays. It outlines the essential requirements that must be completed before your build date.

Failure to meet these requirements may result in delays, additional charges, or an inability to complete the build.



Before your build is booked

Before we confirm your build date, you must ensure the following:



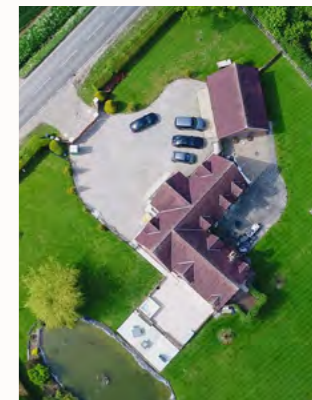
- 1 A suitable base has been prepared



- 2 Access to the build area is clear



- 3 Electrical installation has been planned with a qualified electrician



- 4 Space requirements have been met

! Our team may request photos of the build area prior to confirming delivery.



Sauna build overview

Your Hekla sauna will be installed on-site by our trained build team.

What our team will do:

- Full structural build from base level
- Build of walls and roof structure
- Application of waterproof membrane
- Installation of roofing shingles
- Final external assembly and finishing

What is NOT included:

- Electrical installation
- Internal heater connection
- Any external groundwork or base preparation

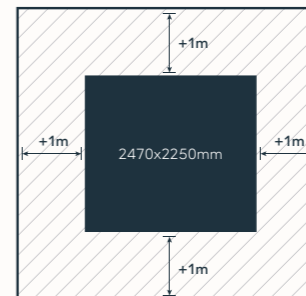
Once the structure and roof are complete, the build is considered finished.

Sauna Footprint

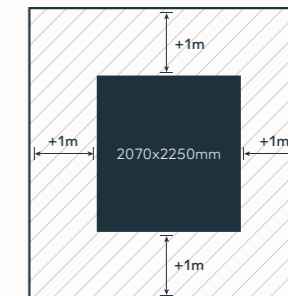
- ! Please allow technicians 1m around the sauna footprint to allow space for assembly process.

 Sauna Footprint

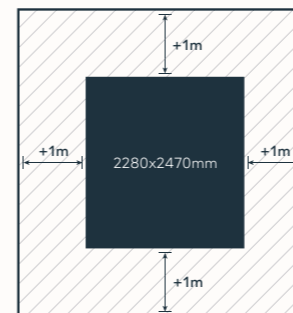
 Clearance Area



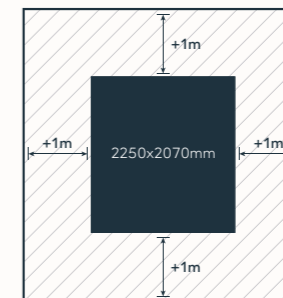
Barrel 250



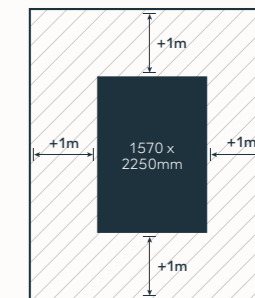
Barrel 210



Cube 250



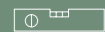
Cube 210



Cube 160

Site requirements (non-negotiable)

To proceed with build, the following must be met:



- 1 The ground must be completely flat and level



- 2 The base must be solid and structurally sound



- 3 A minimum of 1 metre clearance is required on all sides

These requirements are critical.

- ! An uneven base will compromise the structural integrity of the sauna and prevent correct alignment during build. Insufficient access will prevent our team from safely completing the build.



Base requirements

- ! The base must be completed in advance of build and fully settled

You must provide a base that is:

- Flat
- Level
- Solid
- Permanent

Recommended base types:

- Concrete slab
- Reinforced patio or paving (with solid sub-base)

Un-suitable base types:

- Grass
- Gravel
- Soil or soft ground



Access requirements

It is the customer's responsibility to ensure safe and adequate access to the build area.

Minimum requirements:

- Clear access route to the build area
- No obstructions (furniture, fences, plants, etc.)
- Minimum 1m width access where required

You must also ensure:

- No overhead obstructions (trees, cables, rooflines)
- Safe working space for ladders and tools
- Clear working area around the full sauna footprint

❗ If access is restricted, build may be delayed or require additional equipment at the customer's cost.

Build day

On build day, our team will:

- 1 Deliver all sauna components
- 2 Assemble the full external structure
- 3 Install roofing system and waterproofing
- 4 Complete external finishing
- 5 Check the heater and components are not damaged

The sauna will then be left ready for electrical installation.



! Additional technical information can be provided by our After Sales team prior to delivery.

Electrical requirements

Electrical installation must be carried out by a qualified electrician.

Our team will not:

- Install the heater
- Connect electrical components
- Drill cable access holes

Your electrician will need to:

- Drill a suitable cable entry point
- Install and connect the heater
- Connect lighting and controls
- Ensure all work complies with local regulations

The wiring diagram is located on the underside of the heater.



Post-installation requirements

After installation:

- Heater must be installed and connected
- Sauna stones must be washed and fully dried before use
- Electrical system must be tested and certified



! The sauna must not be used until all electrical work is complete.

Important notes

- Build **will not proceed** if site requirements are not met
- Return visits due to poor preparation **may be chargeable**
- All electrical work **must be** completed by a qualified professional
- Any structural or base issues may **void warranty**



Need support?

If you are unsure about any part of this process, please contact our team prior to installation.

✉ support@superiorwellness.co.uk

HEKLA

Hekla Saunas

Superior House,
Broombank Park,
Chesterfield,
United Kingdom
S41 9RT

heklasaunas.com